



AN1014 - Installing the Net2 server software onto a different PC, Net2 V3

Changing the Net2 PC

To change the PC running a Net2 system, the software must be loaded onto the new PC and all of the files containing the site-specific information must be transferred across to the new PC from the old. Once these tasks have been completed the new PC can be connected to the data line containing the Net2 ACU's and the system will operate using exactly the same site information.

Choosing a PC for Net2

It is important that the PC chosen to run the Net2 server meets the minimum specification.

The current specification for compatible PC hardware, network and operating systems is available on our website at the following link:-
<http://paxton.info/720>

Site specific Net2 Files

All of the files containing the site-specific information in a Net2 system are stored in a single folder. This contains all user and door details, events, reports, pictures and back-ups. See application note: *AN1009 - Configuring Net2 data backup, Net2 v3* < <http://paxton.info/58> >. The default location for this information is C:\Net2 Access Control.

Net2System.mdb - This is the most important file in this folder, it contains all of the user, card and door information. When changing PC it is this file that is the most important to copy across. When the Net2 server is started it always looks to the system database location to find a database called Net2System.mdb. If a file is found Net2 will use the information in the database to run the system. If this file is not found Net2 creates a blank version and starts the Net2 server, the ACU's will be sent the new database information and all of the old data will be cleared.

Net2Events.mdb - This database file holds all of the event information. This is purely a historical record and holds no information associated with the decisions made by Net2. If this historical data is not required it can be deleted and a new Net2Events.mdb will be created.

NetMsg.mdb - This is a temporary database file that holds any information waiting to be sent out to the ACU's on the data line. This file is not essential in a change of PC as any key messages will be regenerated when Net2 is run on the new PC.

Timesheet.mdb and **Cameras.mdb** - These two databases are used with the Timesheet and Cameras add-on packages and store information directly associated with these products. Both files, if they exist, should be retained when changing PC's.

Net2

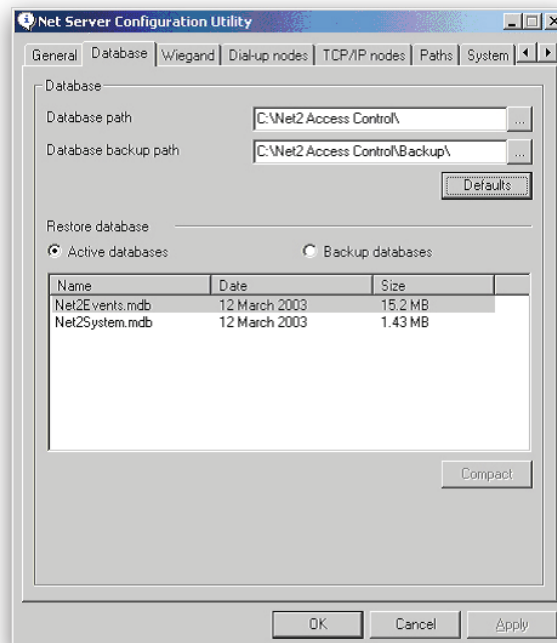
Making the change

Once the system files have been located the changeover is straightforward. Do not move any hardware until the software has been confirmed as working correctly with all user data present.

- ✓ Load the Net2 software onto the new PC, make sure the version you are using is the same or later than the original version being used and run the Net2 application.
- ✓ Close the Net2 software and the Net2 server on the new and old PC's.
- ✓ Locate the folder C:\Net2 Access Control on the old PC; make a copy of the required database files
- ✓ Transfer the system files onto the new PC and replace the newly created versions, of the same name, within the folder C:\Net2 Access Control on the new PC
- ✓ Start Net2 software on the new PC and check all user and site information is in place
- ✓ Disconnect the Net2 data line from the old PC and connect it to the new PC
- ✓ Run the Net2 application, the software will look for the database files in C:\Net2 Access Control and use them to run Net2. The result will be an exact copy of the original system on the new PC

Changing the location of the database files

Although the database files must be stored on the Net2 server PC they do not have to be kept in the default location. To change the location of the databases first launch the "Net2 Server configuration utility" and go to the "Database" tab. This is where the paths to the system databases and the location where the backup copies will be saved are defined.



Remember, if Net2 is launched with an alternative database path, the database files must be moved to this location. If not, a new, blank, database will be created and the ACU's will be sent this blank database.