





AN1049 - Holding a door unlocked with Net2 software

Net2 allows the user to create and select a timezone to hold the door unlocked automatically.

-  Select the door from the Doors menu
-  Select the Timezone that you require in the 'Unlock the door during' menu.

Under normal operation, this should be set to 'At no time' so that a valid user card must be presented each time to gain access.

In the example below, we have selected the working hours timezone. The door will therefore be unlocked during the period defined in the 'Working hours' timezone.

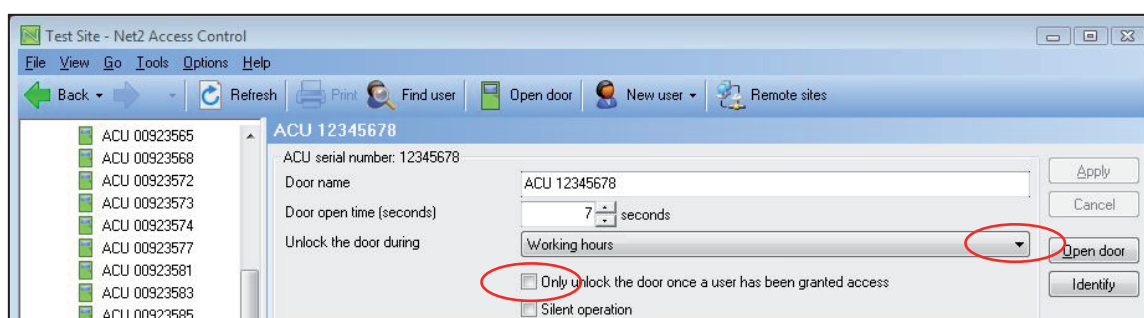
You could create a specific timezone (e.g. door unlock 08.30 - 17.30) to only be used for this function.

This is useful where a receptionist is present to supervise visitors during office hours but overnight the main door will be locked and require a valid user card to gain access.

This feature can be further defined by checking the 'Only unlock the door once a user has been granted access' box. This ensures that the door will not unlock if staff have been delayed and the building is still unoccupied when the timezone becomes active.

To create a timezone, refer to:-

AN1038 - Using Access Levels and Timezones. < <http://paxton.info/847> >



Net2

V4