

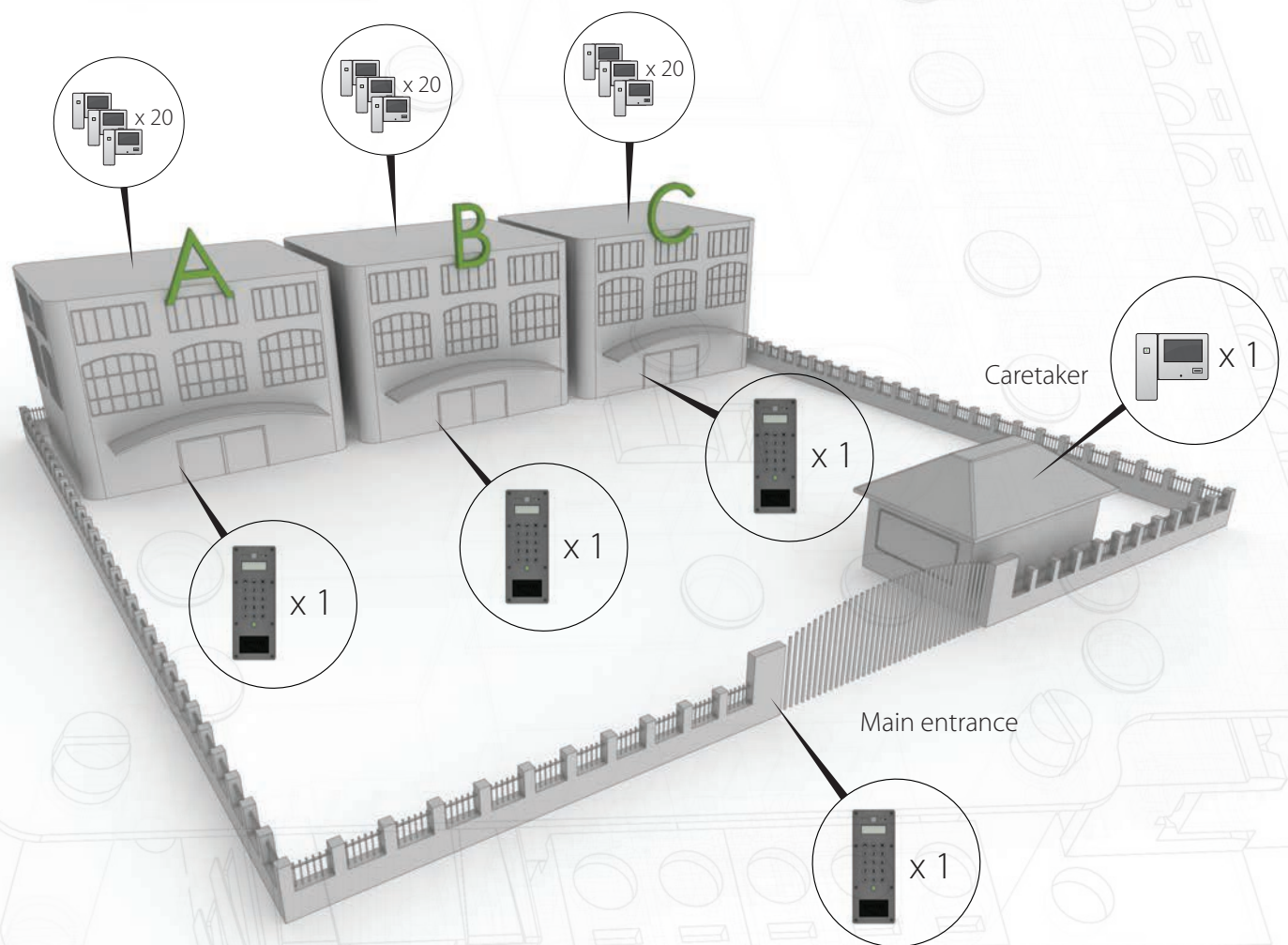
# Setting up Net2 Entry grouping

## Overview

Grouping is a feature that enables you to separate a Net2 Entry system into multiple groups, allowing you to control which monitors can be called from selected panels. This is useful in scenarios where you may have a gated community of multiple offices or apartments, such as a business park, school, university campus, hospital etc.

## Grouping Scenario

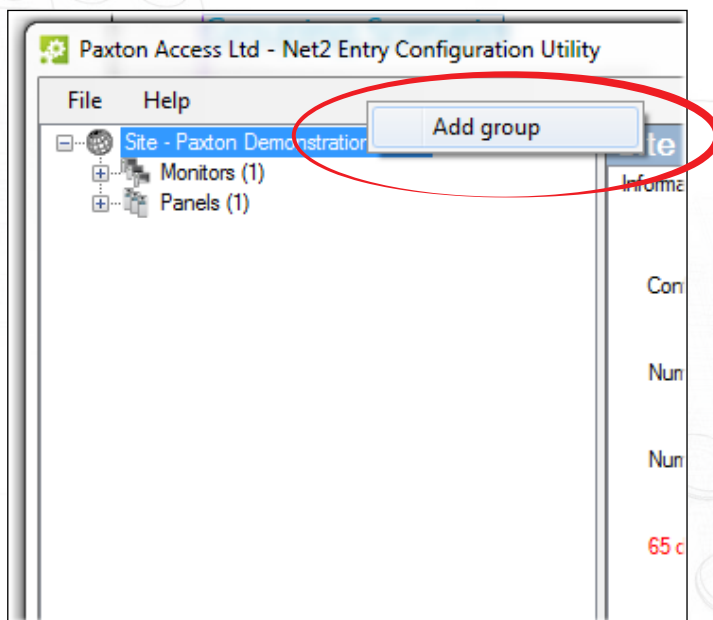
In this example there is a single main entrance leading through to 3 separate apartment blocks. There is also a single caretaker onsite who can be called from all panels.



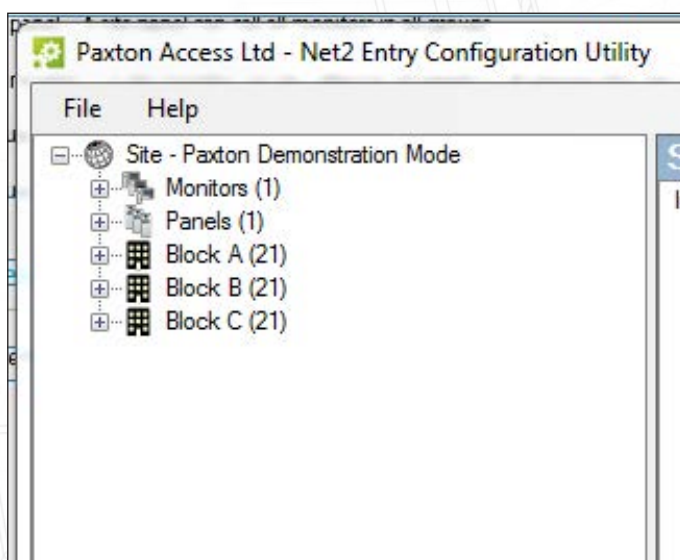
Once setup, the main entrance panel will be able to call the Caretaker and Blocks A to C. Once inside the gated community the Block A panel will only be able to call residents in that block. This is the same for Blocks B and C.

## How to setup grouping in the Net2 Entry configuration utility

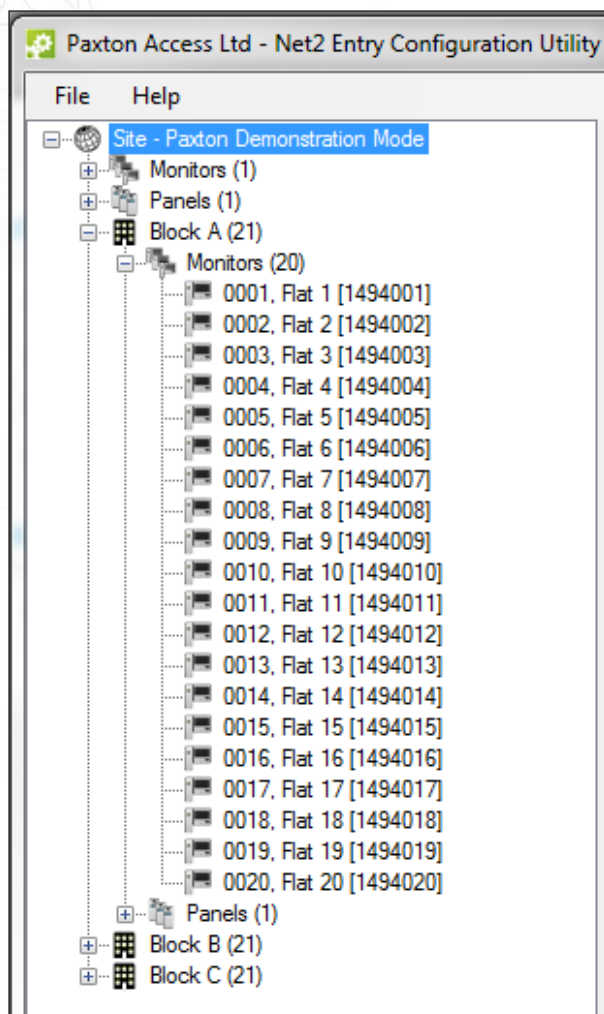
1. Once logged into the Net2 Entry configuration utility, right click on the  (Site) icon and select 'Add group'



2. Continue this process until you have created a group for each of your apartment blocks



- Now simply click and drag the panels and monitors from the root 'Site' group into the groups you have just created, making sure to leave the main entrance panel and caretaker monitor in the 'Site' group



## Calling a Group monitor from a Site panel

- When calling a 'Group' monitor from a 'Site' panel, the user will first be prompted to select the group containing the monitor they wish to call.
- Once a group has been selected they will then need to either enter the number or locate the name of the monitor they wish to call, depending on the operating mode the panel is running in.

## Grouping Rules

---

- Site panel – A site panel can call all monitors in all groups
- Site monitor – A site monitor can be called by all panels in all groups plus any site panels
- Group panel – A group panel can only call monitors within its own group plus any site monitors
- Group monitor – A group monitor can only be called by panels within its own group plus any site panels
- Monitor ID's – can be repeated in separate groups
- Site monitors – Must have unique monitor ID's