



# Paxton

Ins-30011 Exit buttons



**Technical Support**



01273 811011



support@paxton.co.uk

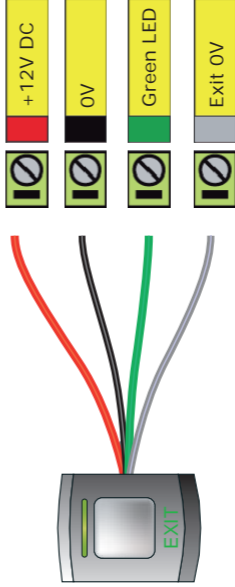
Technical help is available:

Monday - Friday from 07:00 - 19:00 (GMT)

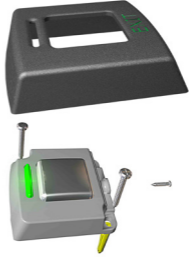
Saturday from 09:00 - 13:00 (GMT)

Documentation on all Paxton products can be found on our website - <http://www.paxton.co.uk/>

## Wiring

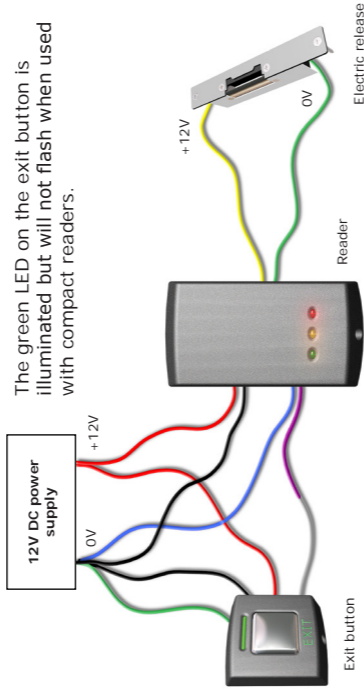


## Fitting



The E75 exit button can also be fitted on a standard UK recessed backbox.

## Wiring to a Compact reader



## E75 Screw connector option



O	12V
O	Exit
O	Green LED
O	0V

## Exit button covers



Additional covers are available in black, white, grey, blue and silver. Registered installers can order these free of charge by logging onto the secure installer extranet: <http://paxton.info/1035> or if you are not a registered installer please call us on: **01273 811011** for more information.

## Specifications

Environment		Min	Max	
Operating temperatures - all items		- 20 °C	+ 55 °C	
Waterproof				NO
Cable length				5 metres
Electrical		Min	Max	
Voltage		8V DC	14V DC	
Current			70 mA	
Dimensions		Width	Height	Depth
E38		39 mm	48 mm	13 mm
E50		50 mm	58 mm	14 mm
E75		86 mm	94 mm	16 mm



Paxton Access Ltd hereby declares that this product is in conformity with all the essential requirements of the Directive 2014/53/EU. <http://paxton.info/3685>

The full declaration of conformity is available on request. Contact details are provided at: <http://paxton.info/596>